



NEWSLETTER

487 COMSTOCK AVENUE / LOS ANGELES, CA. 90024
Telephone: (213) 474-4450, 878-3737

President--Joanna Cowden
Co-Vice-President--Penny Kanner
Co-vice-President--Cynthia Brantley
Secretary-Treasurer--Debby Kennel
Graduate Student Coordinators--
Gayle Escohar; Lori O'Dell

Newsletter Co-Editors--
Jackie barnhart; Carole Hicke
Political and Social Action Coordinator--
Alice Clement
Program Coordinator--Petsy Perry

Volume XIII, No. 3

CALL TO CONVENTION ISSUE

February, 1980

GREETINGS FROM JOANNA COWDEN

We meet this year on March 7-9, ~~Fri-Sat-Sun.~~, at Aldersgate Lodge in Los Angeles. Please see p 3-6 for exact address and directions and for information concerning registration, accommodations, and program. On behalf of the executive board of the WCAWH I extend a warm welcome to all members and friends and urge you to attend.

Here are some announcements recently brought to my attention which may be of interest to you:

1. Prof. Thomas Jablonsky, Dept. of History, University of Southern California, Los Angeles, CA 90007, has contacted me concerning the upcoming August meeting of the Pacific Coast Branch of the AHA. He informs me that there have been no panels on women's history, family history, or even social history in general as yet scheduled. Therefore, he is trying to organize a panel on one of these topics and would welcome proposals from any of our members. He explains that although the official deadline is long past, proposals in any of these areas may still be submitted directly to him at the above address. He would, however, like to see these as soon as possible. His phone numbers are: (213) 741-7465 (office) and (213) 289-0919 (home).

2. From the-Schlesinger Library at Radcliffe College comes an announcement that Radcliffe has received an NH grant of \$99,945 for the purpose of developing interest in "Women's Issues in Health and Education: Development of Archival Resources for Social History." Schlesinger Library has acquired several collections of personal papers, as yet unprocessed, which throw light on both areas. For example, Annie Ware Winsor Allen (1865-1955), founder of the Roger Ascham School in White Plains, N.Y. in 1902; Ethel Cohen (1887-1977), medical social worker and teacher; and Pauline Newman, educational director of the International Ladies' Garment Workers' Union Health Center from 1907 until recently. (This is not a complete list.) Anyone interested should contact Patricia King, Director of Schlesinger Library, Radcliffe College, 10 Garden St., Cambridge, Mass 02138. Phone is (617) 495-2647.

* * * * *

MESSAGE TO MEMBERS FROM PENNY KANNER

I look forward to becoming president of WCAWH next year and to working even more closely with all of you toward building our Association into an organization that serves the needs and goals of professional women in the field of history. Because needs and goals change with the times, the challenges ahead require full participation of the membership as perhaps never before. I am of course thinking of the advancing "job crunch" for academic historians that parallels the "widening sphere" of occupations for women who are trained for our discipline. I am thinking also of greater opportunities for women who want to undertake positions of leadership in the network of historical and educational organizations--and perhaps in politics. Broader horizons include jobs in publishing and positions as consultants and guest speakers. Of course, we all want to continue being good scholars who are constantly broadening our knowledge and skills. WCAWH brings us together in a mutual interest-mutual support network

(continued on next page)

to examine, define, and pursue opportunities together. It also keeps us in a close cooperative relationship with our sister organizations across the country and, **especially**, the Committee of Women Historians and **CCWHP/CGWH** connected with the **American Historical Association**. We are a vital group working to increase our vitality. Next year (after our March convention) I need your direct help and support to consolidate our efforts and goals. I need you to help start new organizational services (like the establishment of a Speakers Bureau within WCAWH to service the public as well as academic institutions) and to strengthen those we have already provided for in our constitution. Please attend our conference in March and make suggestions or undertake leadership. Write to me and to our executive board about your needs and ideas. Above **all**, take leadership and seek office. Our future is in togetherness.

URGENT REQUEST: Can you help computerize **CCWHP** and **CGWH** mailing labels? Joan Hoff Wilson, who has been handling the mailing labels for these two organizations can no longer do so. If anyone has access to a computer with the ability to print address labels, would they please consider taking over this responsibility? Joan says that the work requires very little time. If interested, please contact Catherine M. Prelinger, Chestnut Hill Road, Killingworth, Conn 06417.

* *

A new program in Historical Editing and Publishing procedures is being offered at Arizona State University this spring. Students will learn to apply the skills of the historian and editor to the concrete needs of book and journal publishers. Courses will be integrated with the regular program leading to the Masters of Arts degree. If you wish information, write to the coordinator of the program: Seth Luey, Department of History, Arizona State U. Tempe, AZ 85281.

The Berkshire Conference will hold its 5th Conference on Women's History at **Vassar** College in June 1981. Proposals in the form of panels, workshops, or papers are invited. Panel proposals should include a title indicating the theme of the panel, names of participants and titles of their papers, and names of **commentators** and chairpersons. Proposals should include a brief abstract of each paper and the address, phone number, and brief **vita** of each **participant**. Include a self-addressed postcard for acknowledging receipt of proposals. **Cross-cultural**, comparative and trans-national panel packages are particularly welcome. Please submit to **JoAnn McNamara**, 500 West 111th St., N.Y., N.Y. 10025 by March 15, 1980 (their recently-announced "late date").

Many members of the WCAWH attended the American Historical Association conference in New York City. At a meeting of the **CCWHP/CGWH** Penny Kanner reported on the activities of this organization. Stating that our strong affiliate consists of 400 members from many kinds of historical activities, she noted that the group includes the areas of California, Utah, Wyoming, and Nevada, and that it is "a focal group." She noted that the Huntington Library has recognized the Southern branch and has offered its facilities for their scholarly use. She noted that we are at the same time "a clearing house, a focal-point for many kinds of activities, and an affiliation." To the marked interest of the audience, she detailed those activities. It was the consensus that the WCAWH takes an inspiring position in leadership important to women's participation in the historical profession.

On January 15, 1980, the **Perkeley** Women's Center invited interested persons to a reception honoring three women college presidents (they represent more than 90% of the women college presidents in the nation). They were Gail Fullerton of San Jose State University, Farhara White of Mills College and Jacqueline Mattfeld of **Parnard** College. The presidents spoke to the question whether women's colleges are desirable in the modern world. Each presented reasons why a woman's college offers advantages. President Fullerton pointed out that women commonly get "stalled" at middle levels of **performance**; she centered her comments on the topic of mobility in employment areas. President White **spoke** from the **point** of view of the female student; she saw special strength in varieties of opportunities presented to young women and in effects of an "environment of aspiration" which the women's college can create for women at a critical time of their lives. President Mattfeld pointed out that women's colleges are the only social institutions now using men and women in about equal proportions; she believes these colleges offer professional women release from the built-in self destruct modules of other institutions and she **believes** they offer the nation an institution that speaks for female excellence.

WCAWH CONFERENCE:

Our conference in 1980 will be held at Aldersgate Lodge, and an adjacent facility, the Pacific Palisades Women's Club, in Pacific Palisades on the weekend of March 7-9. The Lodge, which will house and feed us and provide meeting rooms, is an 1880s Victorian mansion. It originally sat on the corner of Wilshire and Vermont, but was moved to Pacific Palisades in the 1920s to make room for the widening of Wilshire Blvd. It is run by the Methodist Church as a conference and retreat facility.

Pacific Palisades is on the coast, just north of Santa Monica, and 25 minutes by car from the airport. In its environs, besides the beach and the mountains, are the Getty Museum, the Will Rogers home and grounds, the Self-Realization Meditation center, all possible activities for Sunday afternoon, after our packed and excellent program, or for Friday afternoon.

We have kept fees and expenses as low as possible and have a reduced fee for students and the Marginally or Uncompensated Workers in the Vineyard of Cleo. We have the following three packages:

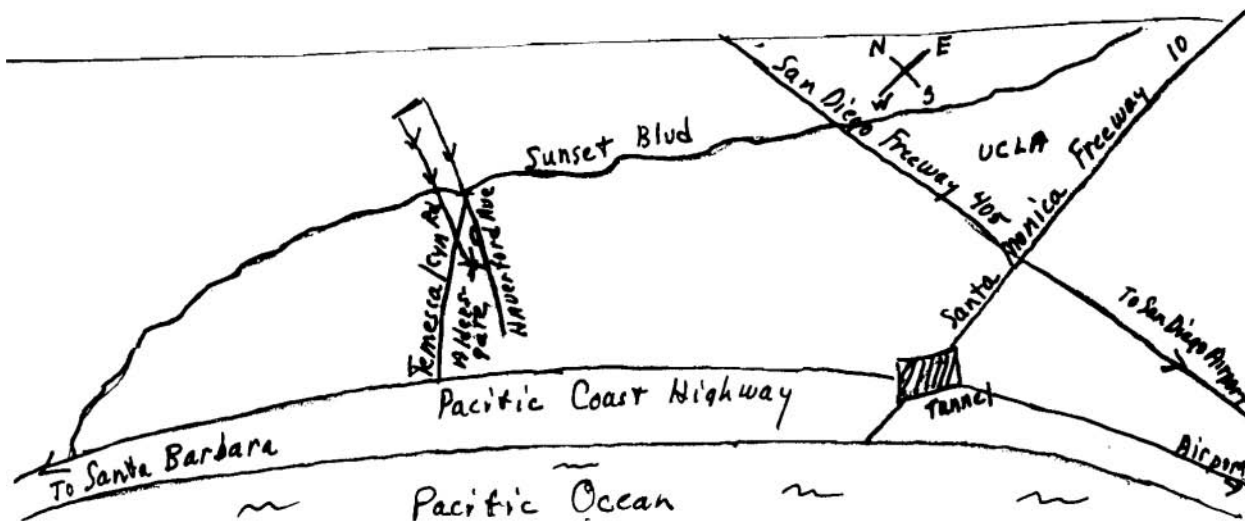
- A. For out-of-town guests, the conference package of \$42.00 (\$37.00 for Students, etc.) includes: (THIS IS A BARGAIN UNLIKELY TO BE REPEATED!)
 - two nights lodging at Aldersgate
 - two breakfasts, Saturday and Sunday
 - two lunches, Saturday and Sunday
 - coffee and snacks
 - the Conference fee of \$17.00 (included in the \$42.00)
- B. For local women historians, the Conference fee of \$17.00 (\$12.00 for Students, etc.) includes:
 - lunch Saturday, snacks, and use of the facilities from Friday night to Sunday afternoon and expenses attendant upon the Conference.
- C. For those attending only Sunday morning's program, \$7.00.

Friday and Saturday night dinner we have left up to conference attendees to arrange. There are several adequate and inexpensive restaurants in the Pacific Palisades within walking distance of the Lodge and we will have a list of these at registration. Outside the Palisades, the choice of restaurants is hounded only by Los Angeles--which, as we all know, tends to be rather boundless. If you have a strong desire to eat at the conference facility, please indicate this on your registration and we can arrange this, but we must know in advance.

Local WCAWH members will try to arrange airport pickup and return, provided your request comes in with your registration and within 10 days of the conference. Otherwise taxis are the only practical solution, if you are not being met by friends. We are all trying to work together to make possible the largest number of participants, and are all aware of the increased cost of air fares.

For additional information or questions, please contact Alice Clement, 604 Swarthmore Ave., Pacific Palisades, CA 90272. Tel: (213) 454-1801 after 5 p.m.; (213) 347-0551, Ext. 482 days.

RESERVATIONS MUST BE RECEIVED BY FEB 27TH TO ASSURE LODGING. See p. 7 for Registration Form.



NOTES ON MEMBERS

Frances Richardson Keller was appointed last fall to the selection panel reviewing projects in the Education Division of the National Endowment for the Humanities. She participated in the Washington, D.C., meetings for discussion and selection of projects, and will serve as reviewer in 1980.

Karen Offen, CROW, Stanford U., has been awarded an NEH fellowship for 1980-81 to complete work on her book, The Woman Question as a Social Issue in Republican France (nineteenth century).

Maryanne Horowitz, Occidental College, has had her article, "The Image of God in Man--Is Woman Included?" accepted for publication in Harvard Theological Review 72:3-3 (May-Dec.) 1980.

Estelle R. Freedman, Stanford U., has received the Hamilton Prize for her book, Their Sisters' Keepers: Women's Prison Reform in America, 1840-1930.

Susan Groag Bell, CROW, U. of Santa Clara, and Karen Offen are preparing a book for publication with Stanford U. Press: Women, The Family and Freedom, which will present a social history of ideas in the debate about women in Europe and America, 1750-1950.

Sarah Stage, UC Riverside, has published her book, Female Complaints: Lydia Pinkham and the Business of Women's Medicine. Sarah is now working on Women and the Progressive Impulse.

Leslie Hume, Stanford U., and Karen Offen are general editors of the forthcoming book, A Documentary Account of Women's Lives in 19th Century England, France, and the United States. Among the associate editors is WCAWH member Estelle Freedman. Publisher is Stanford U. Press.

Alison Heisch, Pomona College, has announced the consultant and contributing editors to the English Women in Print (EWIP) project. These include WCAWH members Rosemary Masek, Maryanne Horowitz, and Penny Kanner. This is a Huntington Library enterprise.

Linda Popofsky, Mills College, has returned from her research trip to England where she continued investigation of seventeenth century English politics.

Cynthia Rrantley, UC Davis, is chairperson of the Status of Women Committee on her campus.

Margaret Rossiter, UC Berkeley, has worked hard to get travel funds for WCAWH members to attend the Berkshire Conference and present papers. But she has drawn a blank in convincing foundations and other funding organizations to award a grant. Thanks are due to Margaret for her valiant efforts.

Janice Simler Lewis, Chaffey College, presented a generational study of the Forten-Purvis women at the National Association for the Study of Negro Life and History.

Elizabeth Gleason, U. of San Francisco, was the recipient of two fellowships; she has recently traveled twice to Venice, Italy, for research in her areas of study.

Joan M. Todd, San Jose State U., delivered several lectures at the Jewish Theological Seminary of America at the New York headquarters during the January recess. She conducted research in the Collingwood papers in London, England, during the holiday period.

Joyce Duncan Falk, Clio Press, is the editor of a recently-published book, Proceedings of the Sixth Annual Meeting of the Western Society for French History. It contains papers, abstracts of papers, and commentaries on topics ranging from medieval financial administration to World War I.

* * * * *

THE INSTITUTE FOR HISTORICAL STUDY: Paula Gillette calls your attention to the two-hour presentation on the Institute to take place at the March conference. Representatives of the Institute will be there to answer questions and offer memberships. If you are interested, you can sign up there, or contact Paula Gillette, 25 Cypress Avenue, Kentfield, CA 94909.

WEST COAST ASSOCIATION OF **WOMEN** HISTORIANS

TWELFTH ANNUAL CONFERENCE PROGRAM
7-9 March 1980

ALDERSGATE
925 Haverford
PACIFIC PALISADES, CA
90272
454-9006
459-3417

Friday, March 7

Registration--4-9 p.m.

Wine and cheese reception--6-8 p.m.

"Rediscovering Judith Shakespeare's Sisters: Feminist Scholarship and
Early Women Writers"--8~30p.m.

Alison Heisch, Pomona College and Huntington Library

Saturday, March 8

Breakfast--8 a.m.

Morning Session I--9:00-10:30 a.m.

1. **BLACK WOMEN IN ANTEBELLUM UNITED STATES**

Frances Foster, San **Diego** State U., Commentator-Chair

"The **Forten-Purvis** Women and the Anti-slavery Crusade,"
Janice **Sumler** Lewis, Chaffey College

"Social Stratification in the **Antebellum** Slave Community,"
Maria A. Brown, El **Camino** College

2. **MIGRATION THEORY IN HISTORY**

Barbara Epstein, **UC, Santa Cruz**, Commentator-Chair

"German Immigrants to the United States," Leslie Kawaguchi, UCLA

"The Migration of Oklahoma Women to California," Sheila Manes, UCLA

Coffee **Break--10:30-11:00 a.m.**

Morning Session II--11:00-12:30 p.m.

1. **PUBLISHING AND HISTORIANS**

Kathryn Kish Sklar, UCLA, Commentator-Chair

"Academic Publishing," Stanley Holwitz, Assistant Director,
University of California Press

"Feminist Journals," Kathryn Ann George, Managing Editor,
FRONTIERS

"Abstracts, Bibliographies, and the Proceedings of Scholarly
Meetings," Joyce Duncan Falk, Director, American Bibliographical
Center, Clio Press

2. **NON-TRADITIONAL SOURCES AND SOCIAL ORGANIZATION**

Catherine E. Read-Martin, Cal State U., Los Angeles, **Commentator-**
Chair

"Women's Power in Myth and Society on Guam" Jeanette **Witucki**,
Cal State U., Los Angeles

"Fostering and Kinship in Medieval Icelandic Sagas," **Tamsin**
Hekala, UCLA

"Social Structure in Manorial Records, Don **Abbott**, UCLA

Lunch--12:30-2:30 p.m.

Afternoon Session I--2:30-4:30 p.m.

1. LOVE AND MARRIAGE: THREE APPROACHES IN AMERICAN HISTORY

Sarah Stage, UC Riverside, Commentator-Chair

"Family Limitation and Domestic Feminism in Victorian America,"
Janet F. Brodie, U. of Chicago

"Mrs. William Howard Taft: Our First Woman President,"
Judith I. Anderson, Cal Poly, Pomona

"Love Letters of Nineteenth-Century America," Karen Lystra,
Cal State U., Fullerton

2. ASIAN-AMERICAN IMMIGRATION

Gail Nomura, UCU, Commentator-Chair

"An Historical Background of Chinese Immigration to the United States,"
Helen Low, Brandeis U.

"The Supreme Court: Its Impact on Asian Bilingual Cross-Cultural
Education," Estelle Pau-on Lau, U. of Pacific

Afternoon Session II--4:30-5:30 p.m.

THE INSTITUTE FOR HISTORICAL STUDY--Francesca Miller, Paula Gillette,
Lori O'Dell

Business Meeting--5:30-6:30 p.m.

Dinner--6:30 p.m.

Evening Session--8:30-10:00 p.m.

THE VARIED ROLES AND OCCUPATIONS OF HISTORIANS

Marilyn Garber, Chair, Attorney and Professor of History, Cal State U.,
Dominguez Hills

Mary Jane Parrine, Curator of Romance Languages, Stanford Libraries

Deborah Jakubs, Graduate Student Bibliographer Program, Stanford

Patricia Hanson, Salem Press Associate Editor

Melinda Frye, Curator, Oakland Museum

Sunday, March 9

Breakfast--8:30 a.m.

Morning Session--9:30-11:00 a.m.

1. THE CURRENT STATUS OF WOMEN'S STUDIES

Sherna Gluck, Cal State U., Long Beach, Commentator-Chair

"Women's Studies and Inter-disciplinary Approaches to History,"
Stephanie Coonz, Evergreen College

"Women's Studies and Sociobiology: The Questions of Evolution and
History," Kathleen Casey, UCU

2. JEWISH SOCIAL HISTORY

Frieda Furman, USC, Commentator-Chair

"The Jewish Community of Barcelona in the 13th Century: Jews
Living in a Gentile World," Leila Berner, UCU

"Culture and Politics: Yidish Writers, 1900-1940," Norma Fain
Pratt, Mt. San Antonio College

"The Jews of Utah, 1854-1978: a Film and a Paper," Hynda Rudd, USC

Business Meeting--11:30-12:00 noon

Lunch and Adjournment--12:00 noon

Pre-Registration Form, Twelfth Annual Conference
March 7-9, 1980

NAME _____ TELEPHONE _____

ADDRESS _____

Check One: (See page 3 for details of plans.)

_____ Plan A: \$42.00 (~~\$37.00~~ students) for four meals, two nights
lodging, and conference fee.

_____ Plan B: \$17.00 (\$12.00 students) includes conference fee and lunch

_____ Plan C: \$7.00 Sunday morning only.

I would like transportation to and from the LAX airport if possible. My
arrival/departure times are: _____

All checks should be made out to the WCAWH and sent to Debby Kennel,
1250 Norman Place, Los Angeles, CA 90049. Reservations must be received by
February 27th in order to assure lodging.

* - * * * * * * * * * * * * *

NOTICE: 1980 dues are due ---- \$5 for employed persons; \$2 for students and
unemployed. Those attending the conference can send Debby Kennel a joint check
for both the conference and dues, so long as they indicate either on the check
or in a note that the check is for BOTH. If you plan to pay for day attendance
AT the conference, please be prepared to write a check rather than paying in cash.
It makes the bookkeeping much easier and more reliable! For Debby's address,
see above.

* * * * * * * * * * * * *

If you are not a member of WCAWH but wish to attend our Conference, please
come. You can fill out the above registration form. Anyone wishing to
become a member should fill out the following application and mail to Debby
Kennel (address above).

MEMBERSHIP APPLICATION

Name _____ Institution _____

Home Address _____ Phone _____

City _____ State _____ Zip _____

Mail to: _____

_____ Faculty: Job Title _____ Subject _____

_____ Student _____ Unemployed _____ Non-teaching historian _____

Fields of interest _____

Newsletters are being returned "unforwardable" by PostOffice. If you are
moving send a change of address. Let us know the addresses of "lost"
friends.

JOB OPENINGS

Stanford University

The Stanford History Department is seeking women and minority candidates for three teaching positions: one in American colonial and revolutionary era history; one in modern French history; and one in African history. The appointments begin in September 1980 at the assistant Professor level, with three-year renewable contracts. All are on tenure tracks. Candidates must have received the Ph.D. degree by June 1980, and may have received the degree at any time in the past several years. The teaching load consists of five courses during a three-quarter academic year. Candidates should send a resume and placement folder to the chair of the respective search committee: for the American colonial position, to David M. Kennedy; for the modern French position, to James J. Sheehan; and for the African position, to Kennell A. Jackson, all at the Department of History, Stanford University, Stanford, CA 94305.

Utah State University

The Western Historical Quarterly announces the Western History Association Editorial Fellowship for 1980-81. The WHA Editorial Fellow must enroll in the History Department and the School of Graduate Studies at Utah State U. for a master's program in history. Stipend of \$4000 includes waiving of out of state tuition. The WHA Fellow becomes part of the Quarterly editorial team. Candidates should write a letter setting forth their academic background and how editorial training and a study of the American West will apply to their future professional plans. Forms will then be sent for application to the graduate program in History. A complete application includes: a completed graduate school application form, the personal letter, three letters of **recommendation (forwarded by respondents directly to WHQ)**, and official transcripts of all previous college work. Letters of inquiry must be received by March 15. Applicants will be notified by April 15. Send all correspondence to Editor, Western Historical Quarterly, Utah State University, Logan, Utah 84322.

CALL FOR VOLUNTEER WOMEN HISTORIANS AT OAH CONVENTION

Would you like to meet women from across the nation? Explain feminism and women's history to the interested but uncommitted? Relax in the midst of the noise and confusion of a major convention? The CCWHP is planning to staff a table at the Organization of American Historians' convention, April 9-12, and would like volunteers to help out. We especially request the assistance of West Coast historians, since the convention is being held in San Francisco. If you are willing, please send your name and times available to Lois Banner, Dept of History, U. of Scranton, Scranton, PA 18510.

THE INSTITUTE FOR RESEARCH IN HISTORY announces publication of a new quarterly journal, Women & History, which will publish monograph-length studies in the field of women's history. The journal's cross-cultural, interdisciplinary focus will extend to all periods of history and will explore the relationship between women's past and contemporary issues. Inquiries regarding editorial matters may be sent to: Dr. Eleanor Riemer, Ed., Women & History, Institute for Research in History, 55 West 44th St., N.Y., N.Y. 10036. For subscriptions, write The **Haworth** Press, 149 Fifth Ave., N.Y., N.Y. 10010.

A new organization, one of whose stated aims is to establish a network, is the Association of **Black Women** Historians. If you are a black woman historian or if you are interested in black women's history and have not yet made contact with this organization, write: **Darienne Clark** Hine, Dept. of History, Purdue University, West Lafayette, Indiana 47907.

Do fill out the questionnaire for women historians enclosed in the latest AHA Newsletter. If you do not belong to the AHA get yourself included in the survey anyway. Reg a copy of the questionnaire from a colleague, **xerox** one, or write Dr. Maureen Murphy Nutting, AHA, 400 A St. SE, Washington, DC 20003 for your very own copy.

COPY FOR THE NEXT NEWSLETTER should be sent directly to Carole Hicke, 57 **Coronado** Avenue, San Carlos, CA 94070.

NOMINATIONS COMMITTEE REPORT FOR 1980-81 EXECUTIVE COMMITTEE

The following nominations have been received:

President: Penny Kanner (ex officio), Occidental College
First Vice President: Frances Richardson Keller, San Francisco State U.
Second Vice President: Jackie Barnhart, CSU, Chico
Secretary/Treasurer: Betsy Perry, UCLA
Graduate Student Coordinator: Gayle Gullett Escobar, UC Riverside
Newsletter Editor: Carole Hicke
Social Action Coordinator: Alice Clement
1981 Sonference Coordinator: Mollie Rosenhan, CROW, Stanford U.
Program Co-Chairs: Linda Popofsky, Mills College
Grace Larson, Holy Name College

GRADUATE STUDENTS' COLUMN: SEXUAL HARASSMENT

Have you been sexually harassed? Has a professor, a chair of your department, an administrator -- any male in a position of power -- attempted to use that power to make coercive sexual advances towards you? Sexual harassment is a widespread problem, much more common than one would think. A survey of UC Berkeley seniors revealed that twenty percent had been harassed and over a third knew someone who had been harassed. Moreover, and this is very frightening, a full twenty-five percent of the women who were harassed reported that they also experienced reprisals from their harassers. Simply saying "no" isn't always helpful.

Sexual harassment is a particularly troublesome problem, I think, for graduate students. For most graduate students, there are only a few, and sometimes only one professor in their chosen speciality at a university. The power that these professors have over their graduate students is very real; careers are made and broken with grades, recommendations, and access to research opportunities. Under these circumstances, it is difficult for a student to say no, especially if this is the only kind of attention she receives from her professor. A much more likely response, however, is for the student to blame herself and, in humiliation, drop the class, change fields, or, sometimes, quit graduate school altogether.

In the next newsletter I am going to discuss positive steps that graduate students can take to combat sexual harassment. Women on some campuses have already organized and achieved some victories. I encourage all of you to write me, both about problems of sexual harassment on your campus and what steps you have taken to deal with it.

Gayle Gullett Escobar
1144 Capuchino #4
Burlingame, CA 94010

NOTICE: According to the WCAWH Constitution, Article 8, Section 2: "Notice of intent to raise or lower the dues shall be put in writing in the Call to Convention Newsletter." You are hereby notified that the question of dues will be raised at the next Conference.

Also--Article 8, Section 3: "Dues are payable for the calendar year starting January 1." Dues notices are not sent out, so this is your reminder.

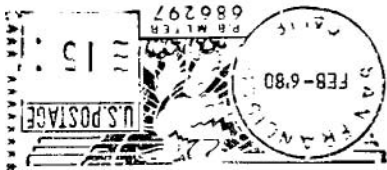
And while we're at it, we might as well quote Article 8, Section 1: "Dues shall be determined by a simple majority of those present and voting at the annual business meeting during the convention."

PROPOSED NAME CHANGE: An Amendment to the Constitution has been proposed to change the name of our organization to Western Association of Women Historians in order to accommodate potential increase in membership in all thirteen western states.



467 COMSTOCK AVENUE / LOS ANGELES, CA. 90024
Telephone: (213) 474-4450, 879-3737

79
Susan Bell
8 Montecito Road
Woodside, CA 94062



San Francisco
State University

A MESSAGE FROM CATHERINE M. PRELINGER

The next year or so will be critical for CCWHP. We must expand our membership; we must find ways in which members can voice their opinions more effectively. Lack of funds and geographic dispersion have made democratic decision-making difficult. By restructuring our organizational form, seeking other varieties of representation on the steering committee than regional groups, we may be able to achieve diversity and at the same time be a more sensitive forum. A major goal should be the continued search for ways in which we can assist independent historians whether it be through providing affiliation, agitating for research associateships at institutions, grant administration, etc. There will be a steering committee meeting at the Organization of American Historians Convention in my room at 10 p.m. on Thursday evening, April 8. CCWHP would welcome full representation from WCAWH in the hope of planning a mutually productive program.